



A M E T H I S

evaluate – rank
evaluate – compare
evaluate – communicate

Evaluation of your research

- A serious reflection on the future of your institution will improve the coherence in your actions and optimise the efforts of research coordination.
- The valorisation of your competences will help you to find grants and to be recognised by the scientific community.

Amethis makes a detailed evaluation of the scientific research of your institution. Its different tools of analysis are namely:

- Bibliometric analysis (publications, citations).
- Analysis of the budget of research (origin and evolution)
- Analysis of objectives (comparison between aims and actions)
- Analysis of collaborations (internal and external)
- Comparison of these results with those of other institutes

Amethis can help you to

1. _____

- Identify your strengths and weaknesses.

2. _____

- Make an assessment of your activities.

We help you to evaluate different teams of research in your institute, analysing their own evolution (scientific results, grants...) and their evolution in the institute, based on their collaborations.

We can help you to manage your research more efficiently.

3. _____

- Evaluate your institution and compare it with others.

We provide you an analysis of quality and productivity of the research in other institutions working in similar fields of research as yours.

4. _____

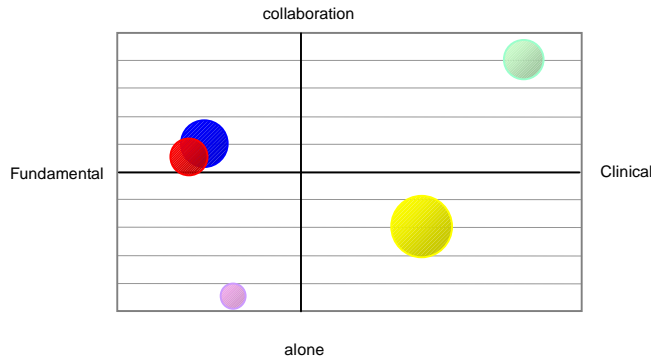
- Communicate your scientific results.

This analysis will provide you with an excellent communication tool towards the public authorities as well as to find new research grants.

We provide you with all the tools necessary to evaluate your position. This can improve the management of your institution and ensure a more efficient communication by same.

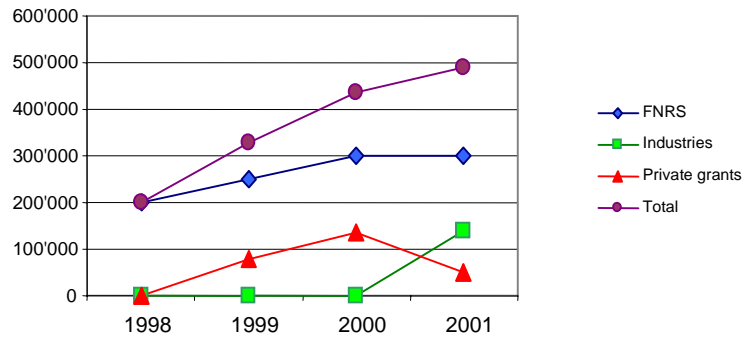
Summary of the activities of 5 groups of research

Comparison of the scientific production correlated to the type of research and the intensity of the collaborations.



Evolution of the grants between 1998 and 2001

Analysis of the origin and amount grants of research of one team.



Multi criteria comparison of the scientific production

Evolution of the scientific production of 3 institutions working in similar fields of research.

